

## Washing machine – Usage Instructions

Only the members of the WEH e.v. i.e. the students living here are allowed to use the laundry facilities. One must also have registered to use the Tower's internet service.

- Layout of the machines and the dryers:



### Introduction - Washing machines:

1. Turn the switch so that it points to „Ende“ (else the machine can't be started)! **The door must be closed, while turning the switch!**

Attention! Usage of the machine before your turn starts will result in a warning or cancellation of your washing account.



2. Press the „Tür“ button (orange) to open the door.



3. Put your clothes in the machine, pay attention to the following:

- All the pockets are empty (no tickets, coins, keys etc.)
- The zips (of jackets / pants) are closed
- The machine is not overloaded.

4. Close the door

5. Select the program:

**! Pay attention to the notes in your clothes, this are just our proposals!**



Coloured clothes:

Material: Cotton, Linen or blended fabrics for e.g.: Pullover, Socks, Innerwear, Trousers, Jeans, Bed sheets or Towels

Light wash: Microfiber, synthetic fibers for e.g.: Bras or Curtains / Drapes

Delicate wash: for e.g.: Lingerie

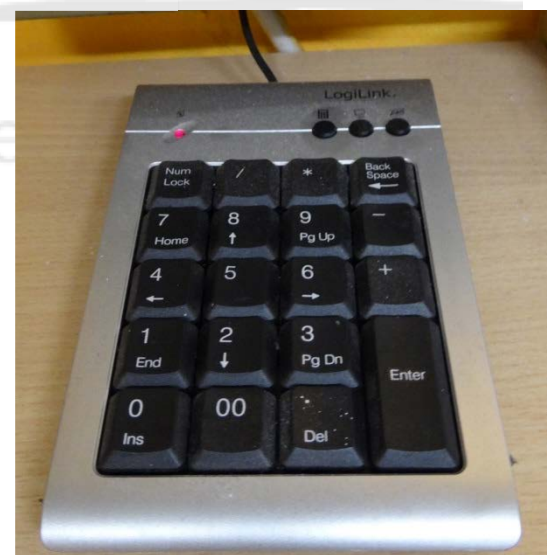


**! Set the temperature**

**according to the advice given by the manufacturer!**

**New clothes can shed colours, so take care to wash them with similar colours!**

6. Enter the 4 digit wash code and press “Enter” to confirm. Pay attention to the following:



- The wash code must be entered within 15 mins of the start of the washing appointment are up
- If it doesn't work, please repeat the above step.
- **Washing coins for missed appointments will not be refunded!**
- In case of any flaw in the system, kindly give notice to the members of the Wasch AG, preferably in person!

### 7. Dosing of the washing soap:

- Here, the water hardness level is 1, so use only a sufficient amount of soap. Avoid using extra soap!
- The picture is just to provide an idea, use the soap as per the recommendations of the soap manufacturer!

DOSIERUNG			
Verschmutzungsgrad			
Wasserhärte	leicht	normal	stark
1 weich	60 ml	90 ml	120 ml
2 mittel	75 ml	125 ml	150 ml
3/4 hart/sehr hart	100 ml	150 ml	175 ml

### 8. Filling in of washing soap:

- Fill the soap only in the left compartment
- **Prewash is mostly not necessary!** (This is used only for clothes which are extremely dirty for e.g. muddy football jerseys)

Prewash is mostly with cold water and the soap remains in the upper compartment.

Ordinary clothes will NOT become cleaner!



### 9. Press „Start“ to begin washing.

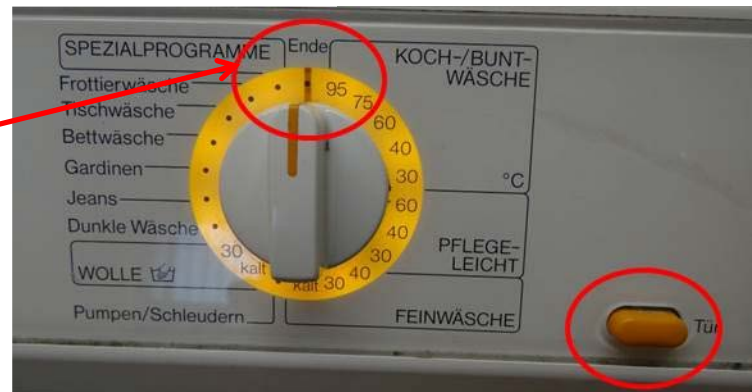
If this does not work, then please repeat steps 1 and 6. **Repeated pressing and /or pushing the button harder does not help!**





10. After the washing is complete. (Display:

Ende / Knitterschutz / Wäsche entnehmen) turn the switch to point to „Ende“. After that, open the door (press „Tür“) and then remove the clothes.



### Introduction Dryer;

You are allowed to use the dryer which is standing opposite to the machine used, and no other, for the next 1.5 hours after the end of the washing appointment. Usage of the dryer before your turn starts will result in the cancellation of your washing account.

1. Press the orange buttons to open the doors



2. Make sure that the filter is clean, if necessary, clean it. (See Point ...)
3. Put your clothes in the dryer and close the door.
4. Select program:

- Extratrocken: The clothes will be very hot and dry and without any remaining moisture. The dryer goes through every sub operation with full



power.

- Schranktrocken: Extremely low moisture remaining in the clothes and the clothes can be folded easily.
- Bügelfeucht: Recommended only when the clothes need to be ironed later!
- Upon selection of the option „Schonen“ the dryer operates at a lower temperature thus reducing any probable damage to the clothes.



5. Start the dryer. (The operation of the dryer can be stopped at any stage upon opening of the door.)

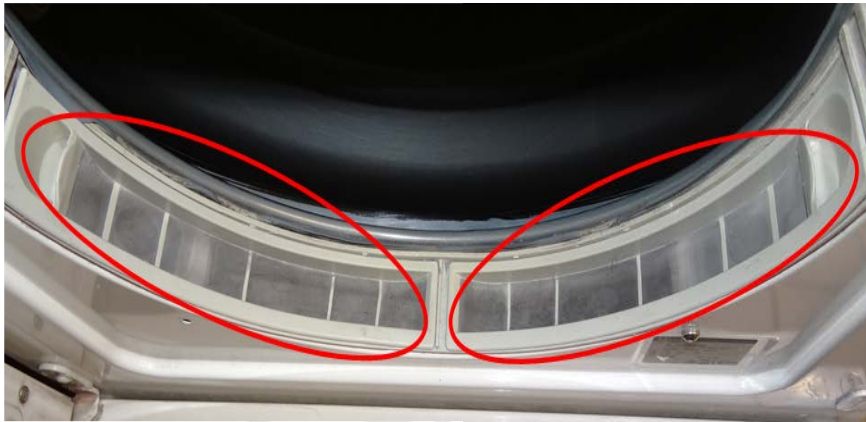


6. After the dryer has completed the drying cycle, open the door (Check Point 1 Dryer) and take the clothes out.

7. Clean Filter:

- **Clean with hands and without pressure.** Not with any rag cloth or a brush!



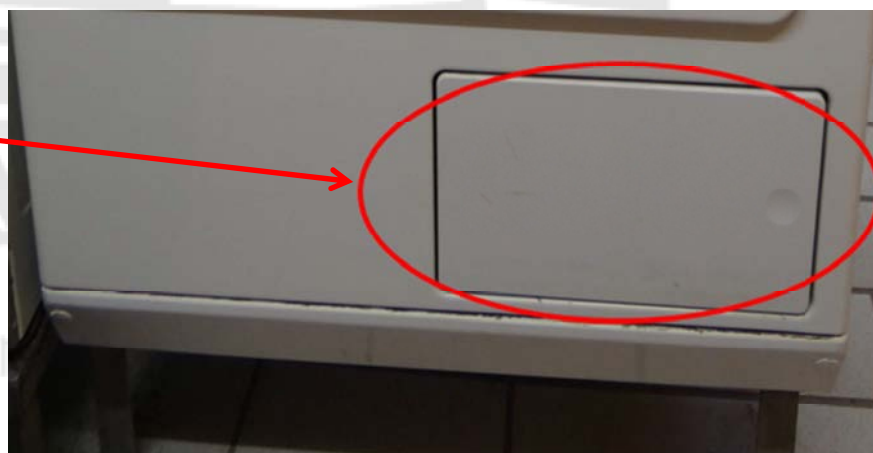


- The filter of the new dryer can be separated upon **Turning** of the marked grips. Then both the parts can be cleaned.

The filter can be found in the compartment shown in the picture below.



Open it by pressing the compartment lightly on the right side.







### Important general points:

- The washed clothes must be taken out of the machine before the next washing appointment begins.  
Thus, you spare other troubles to find a place to keep your clothes and reduces the risk of lost clothes.
- Usage of the washing machines is only for the members of the WEH e.v. It is not allowed to let your friends or acquaintances wash their clothes in the laundry!
- Up to the time the machine is reserved, the washed clothes are allowed to remain inside the machine. You can take the clothes out of a machine, only if your washing appointment has started!
- Cleanliness is necessary! Washing soap or other dirt lying on the machine are not allowed! The equipment to clean can be found in the washbasin in the laundry or is hanging on the wall.
- It is not the aim of the Wasch AG to fine any person, but in case of failure to follow any rules will result in the following:
  - First warning without any following consequences.
  - Second warning with a 6 week ban of usage of the laundry.
  - Third warning with a 6 month ban of usage of the laundry.

In exceptional cases, the person in question can also receive a direct warning from the Studentenwerk.

**Have fun washing !**

**Your Wasch AG**

**(waschen@weh.rwth-aachen.de)**